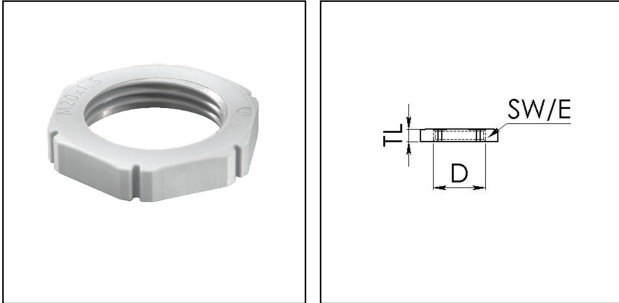


EMUG 32

Locknut, polyamide, RAL 7035, M32



Product illustrations are exemplary and may differ from the chosen product. Further variants and individual customization, we will gladly provide you on request.





Material	Polyamide, fibre reinforced
Temp. range min	-40 °C
Temp. range max	100 °C
Glow wire test	650 °C
Thread type	M
Ø Connection thread D	32
Lead	1,5
Total length TL	6 mm
Key width SW	40 mm
Collar diameter (E)	45 mm
Product Color	RAL 7035
Order no. RAL 7035	10060774
Type	EMUG 32
Packing unit	100
ETIM-Classification	EC000940

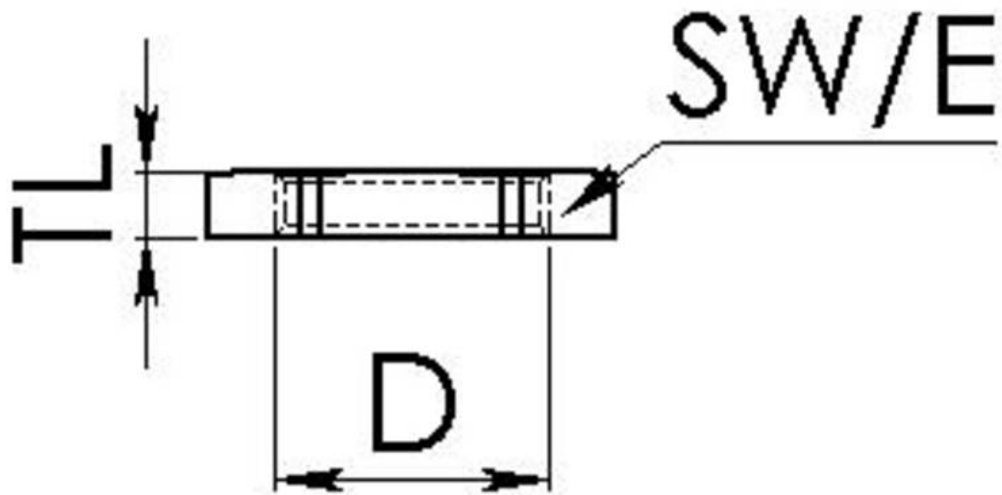
26.06.2019

Your Contact:

WISKA India Pvt. Ltd.

Mr. Omkar Ashar · Unit No.247/248,Raheja Tesla Industrial District II , Edison Bldg No.-1A,
Plot No.GEN2/1/C/PART, TTC Industrial Area, MIDC, Juinagar, Navi Mumbai 400705, India

☎ +91 22/20876438 / 39 · 📧 +91 22/20876441 · o.ashar@wiska.in · www.wiska.in



Your Contact:

WISKA India Pvt. Ltd.

Mr. Omkar Ashar · Unit No.247/248,Raheja Tesla Industrial District II , Edison Bldg No.-1A,
Plot No.GEN2/1/C/PART, TTC Industrial Area, MIDC, Juinagar, Navi Mumbai 400705, India

☎ +91 22/20876438 / 39 · 📧 +91 22/20876441 · o.ashar@wiska.in · www.wiska.in

Other technical data on request / subject to change without notice