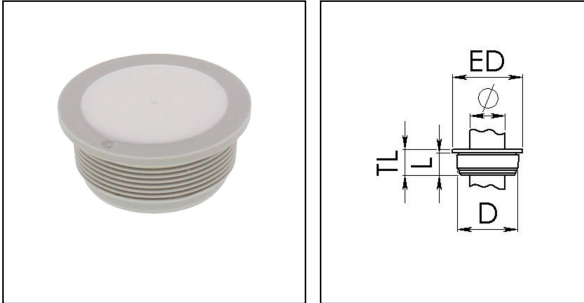


EMT 25 LG

Membrane spout, TPE, RAL 7035, M25



Products may differ in size, colour and appearance to those shown. If you require further information or customisation, please contact us directly.



Material	Thermoplastic elastomer
Temp. range min	-40 °C
Temp. range max	80 °C
Glow wire test	750 °C
Protection class	IP66
Ø Connection thread D	25
Length screw-in thread L	9,5 mm
Ø cable diameter min	1 mm
Ø cable diameter max	20,5 mm
External diameter ED	30 mm
Total length TL	11 mm
Ø Drilling	25 mm - 26,2 mm
Wall thickness S	2 mm
Product Color	RAL 7035
Order no. RAL 7035	10062561
Type	EMT 25 LG
Packing unit	100
EAN number	4007685625616
Tariff number	39269097
ETIM-Classification	EC000451

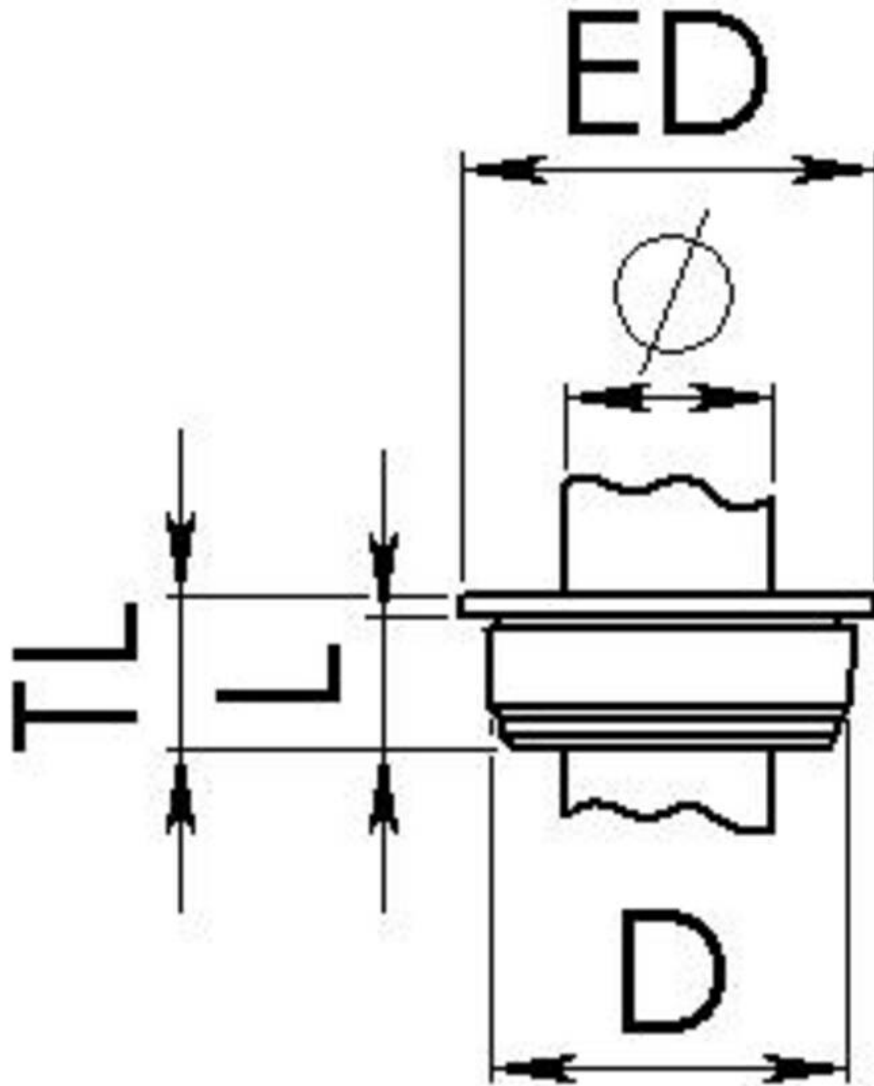
12.05.2026

Your Contact:

WISKA India Pvt. Ltd.

Mr. Omkar Ashar · Unit No.247/248,Raheja Tesla Industrial District II , Edison Bldg No.-1A,
 Plot No.GEN2/1/C/PART, TTC Industrial Area, MIDC, Juinagar, Navi Mumbai 400705, India

☎ +91-22-4967-1438 · ☎ +91-22-4967-1439 · o.ashar@wiska.in · www.wiska.in



Your Contact:

WISKA India Pvt. Ltd.

Mr. Omkar Ashar · Unit No.247/248,Raheja Tesla Industrial District II , Edison Bldg No.-1A,
Plot No.GEN2/1/C/PART, TTC Industrial Area, MIDC, Juinagar, Navi Mumbai 400705, India

☎ +91-22-4967-1438 · ☎ +91-22-4967-1439 · o.ashar@wiska.in · www.wiska.in