

## EMT 32 LG

Membrane spout, TPE, RAL 7035, M32



Products may differ in size, colour and appearance to those shown. If you require further information or customisation, please contact us directly.



<b>Material</b>	Thermoplastic elastomer
<b>Temp. range min</b>	-40 °C
<b>Temp. range max</b>	80 °C
<b>Glow wire test</b>	750 °C
<b>Protection class</b>	IP66
<b>Ø Connection thread D</b>	32
<b>Length screw-in thread L</b>	9,5 mm
<b>Ø cable diameter min</b>	1 mm
<b>Ø cable diameter max</b>	25 mm
<b>External diameter ED</b>	37 mm
<b>Total length TL</b>	11 mm
<b>Ø Drilling</b>	32 mm - 33,2 mm
<b>Wall thickness S</b>	2 mm
<b>Product Color</b>	RAL 7035
<b>Order no. RAL 7035</b>	10062562
<b>Type</b>	EMT 32 LG
<b>Packing unit</b>	100
<b>EAN number</b>	4007685625623
<b>Tariff number</b>	39269097
<b>ETIM-Classification</b>	EC000451

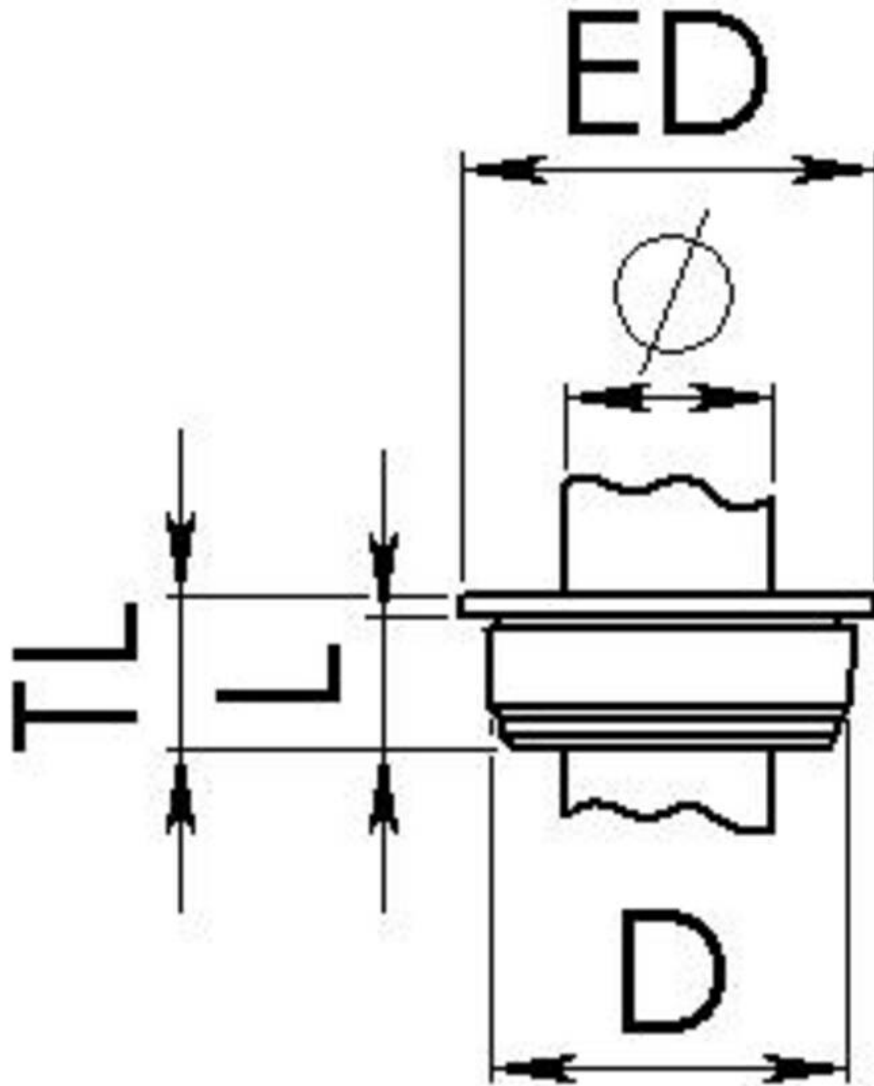
12.05.2026

Your Contact:

**WISKA India Pvt. Ltd.**

Mr. Omkar Ashar · Unit No.247/248,Raheja Tesla Industrial District II , Edison Bldg No.-1A,  
 Plot No.GEN2/1/C/PART, TTC Industrial Area, MIDC, Juinagar, Navi Mumbai 400705, India

☎ +91-22-4967-1438 · ☎ +91-22-4967-1439 · o.ashar@wiska.in · www.wiska.in



Your Contact:

**WISKA India Pvt. Ltd.**

Mr. Omkar Ashar · Unit No.247/248,Raheja Tesla Industrial District II , Edison Bldg No.-1A,  
Plot No.GEN2/1/C/PART, TTC Industrial Area, MIDC, Juinagar, Navi Mumbai 400705, India

☎ +91-22-4967-1438 · ☎ +91-22-4967-1439 · o.ashar@wiska.in · www.wiska.in