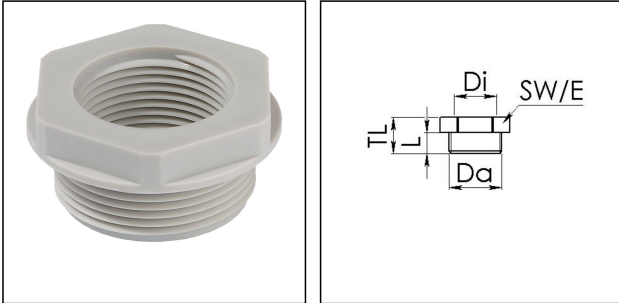


## APM 36/40 LG

Adaptor polyamide, RAL 7035, Pg36 / M40



Products may differ in size, colour and appearance to those shown. If you require further information or customisation, please contact us directly.



<b>Material</b>	Polyamide, fibre reinforced
<b>Temp. range min</b>	-40 °C
<b>Temp. range max</b>	100 °C
<b>Glow wire test</b>	650 °C
<b>Thread type outer</b>	PG
<b>Ø outer thread</b>	36
<b>Length screw-in thread L</b>	14 mm
<b>Thread type inner</b>	M
<b>Ø inner thread</b>	40
<b>Lead inner</b>	1,5
<b>Total length TL</b>	21 mm
<b>Key width SW</b>	53 mm
<b>Collar diameter (E)</b>	59 mm
<b>Form</b>	B
<b>Product Color</b>	RAL 7035
<b>Order no. RAL 7035</b>	10063670
<b>Type</b>	APM 36/40 LG
<b>Packing unit</b>	10
<b>EAN number</b>	4007685636704
<b>Tariff number</b>	39269097
<b>ETIM-Classification</b>	EC000938

### Recommended accessories

Your Contact:

WISKA India Pvt. Ltd.

Mr. Omkar Ashar · Unit No.247/248,Raheja Tesla Industrial District II , Edison Bldg No.-1A,  
Plot No.GEN2/1/C/PART, TTC Industrial Area, MIDC, Juinagar, Navi Mumbai 400705, India

☎ +91-22-4967-1438 · ☎ +91-22-4967-1439 · o.ashar@wiska.in · www.wiska.in

<b>MUG 36 LG</b>	10060677
<b>ADR 36</b>	10061426

23.05.2026

Your Contact:

**WISKA India Pvt. Ltd.**

Mr. Omkar Ashar · Unit No.247/248,Raheja Tesla Industrial District II , Edison Bldg No.-1A,  
Plot No.GEN2/1/C/PART, TTC Industrial Area, MIDC, Juinagar, Navi Mumbai 400705, India

☎ +91-22-4967-1438 · ☎ +91-22-4967-1439 · o.ashar@wiska.in · www.wiska.in



Your Contact:

**WISKA India Pvt. Ltd.**

Mr. Omkar Ashar · Unit No.247/248, Raheja Tesla Industrial District II, Edison Bldg No.-1A,  
Plot No.GEN2/1/C/PART, TTC Industrial Area, MIDC, Juinagar, Navi Mumbai 400705, India

☎ +91-22-4967-1438 · ☎ +91-22-4967-1439 · o.ashar@wiska.in · www.wiska.in

Other technical data on request / subject to change without notice