

KRM 25/20 BK

Reduction adaptor, polyamide, RAL 9005, M25 / M20



Products may differ in size, colour and appearance to those shown. If you require further information or customisation, please contact us directly.



Material	Polyamide, fibre reinforced
Temp. range min	-40 °C
Temp. range max	100 °C
Glow wire test	650 °C
Thread type outer	M
Ø outer thread	25
Lead outer	1,5
Length screw-in thread L	10 mm
Thread type inner	M
Ø inner thread	20
Lead inner	1,5
Total length TL	17 mm
Key width SW	29 mm
Collar diameter (E)	32 mm
Product Color	RAL 9005
Order no. RAL 9005	10063807
Type	KRM 25/20 BK
Packing unit	100
EAN number	4007685638074
Tariff number	39269097
ETIM-Classification	EC000441

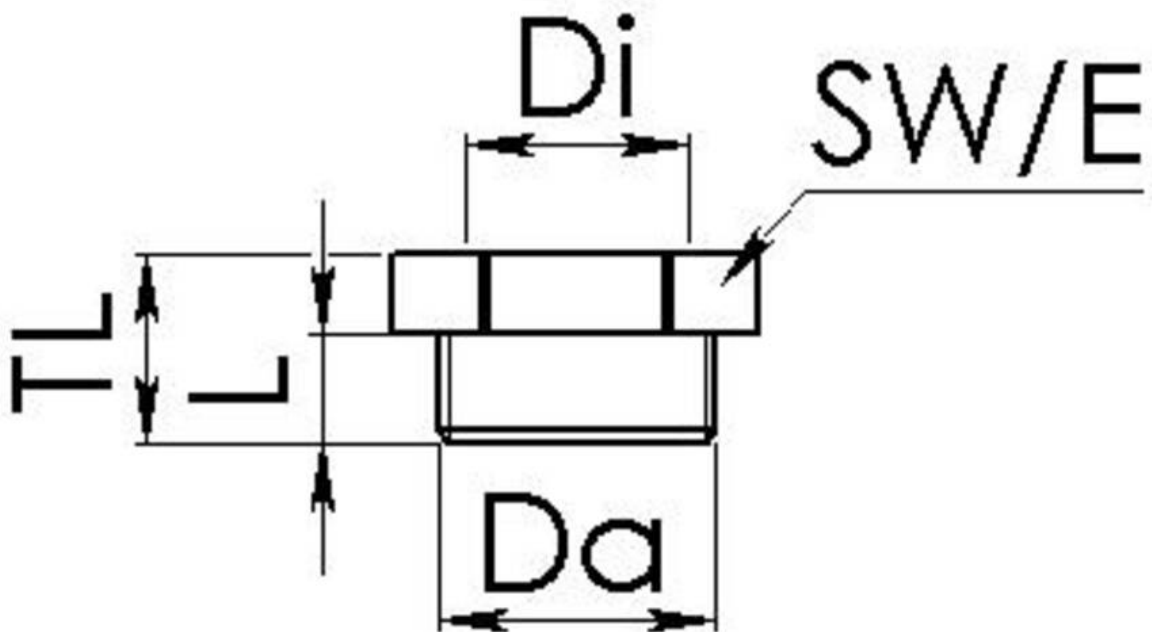
23.05.2026

Your Contact:

WISKA India Pvt. Ltd.

Mr. Omkar Ashar · Unit No.247/248,Raheja Tesla Industrial District II , Edison Bldg No.-1A,
Plot No.GEN2/1/C/PART, TTC Industrial Area, MIDC, Juinagar, Navi Mumbai 400705, India

☎ +91-22-4967-1438 · ☎ +91-22-4967-1439 · o.ashar@wiska.in · www.wiska.in



Your Contact:

WISKA India Pvt. Ltd.

Mr. Omkar Ashar · Unit No.247/248,Raheja Tesla Industrial District II , Edison Bldg No.-1A,
Plot No.GEN2/1/C/PART, TTC Industrial Area, MIDC, Juinagar, Navi Mumbai 400705, India

☎ +91-22-4967-1438 · ☎ +91-22-4967-1439 · o.ashar@wiska.in · www.wiska.in

Other technical data on request / subject to change without notice