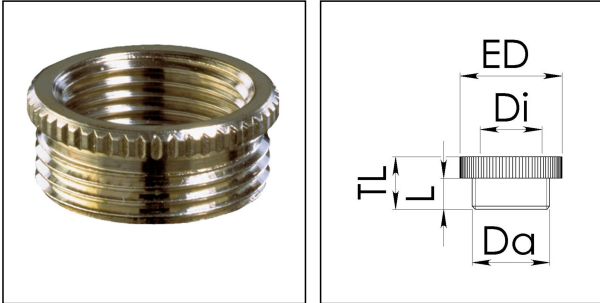


## MRM 20/12

Reduction adaptor, brass nickel-plated, M20/M12



Products may differ in size, colour and appearance to those shown. If you require further information or customisation, please contact us directly.



<b>Material</b>	Brass nickel-plated
<b>Temp. range min</b>	-200 °C
<b>Temp. range max</b>	250 °C
<b>Thread type outer</b>	M
<b>Ø outer thread</b>	20
<b>Lead outer</b>	1,5
<b>Length screw-in thread L</b>	6 mm
<b>Thread type inner</b>	M
<b>Ø inner thread</b>	12
<b>Lead inner</b>	1,5
<b>External diameter ED</b>	24 mm
<b>Total length TL</b>	8,5 mm
<b>Surface</b>	Nickel-plated
<b>Order no. nickel-plated</b>	10063941
<b>Type</b>	MRM 20/12
<b>Packing unit</b>	100
<b>EAN number</b>	4007685639415
<b>Tariff number</b>	74198090
<b>ETIM-Classification</b>	EC000938

### Recommended accessories

<b>EMMU 20</b>	10063143
<b>ORD-E 20 + PG11</b>	10064699

Your Contact:

WISKA India Pvt. Ltd.

Mr. Omkar Ashar · Unit No.247/248,Raheja Tesla Industrial District II , Edison Bldg No.-1A,  
 Plot No.GEN2/1/C/PART, TTC Industrial Area, MIDC, Juinagar, Navi Mumbai 400705, India

☎ +91-22-4967-1438 · ☎ +91-22-4967-1439 · o.ashar@wiska.in · www.wiska.in

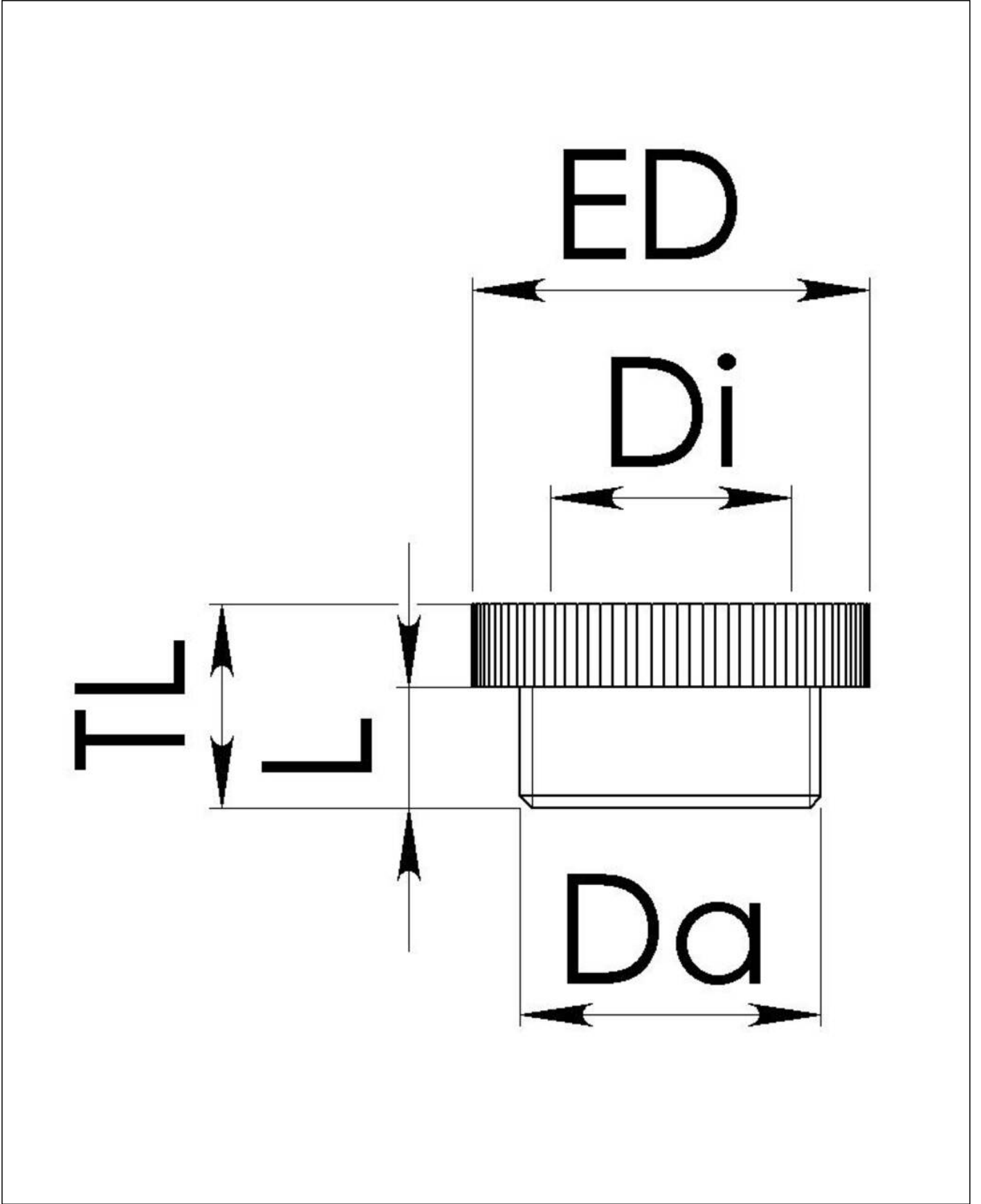
23.05.2026

Your Contact:

**WISKA India Pvt. Ltd.**

Mr. Omkar Ashar · Unit No.247/248,Raheja Tesla Industrial District II , Edison Bldg No.-1A,  
Plot No.GEN2/1/C/PART, TTC Industrial Area, MIDC, Juinagar, Navi Mumbai 400705, India

☎ +91-22-4967-1438 · ☎ +91-22-4967-1439 · o.ashar@wiska.in · www.wiska.in



Your Contact:

**WISKA India Pvt. Ltd.**

Mr. Omkar Ashar · Unit No.247/248,Raheja Tesla Industrial District II , Edison Bldg No.-1A,  
Plot No.GEN2/1/C/PART, TTC Industrial Area, MIDC, Juinagar, Navi Mumbai 400705, India

☎ +91-22-4967-1438 · ☎ +91-22-4967-1439 · o.ashar@wiska.in · www.wiska.in