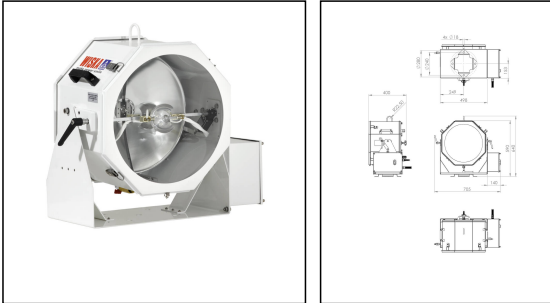


SKS 575

Suez Canal searchlight 575W 230V, stainless steel, RAL 9016



Products may differ in size, colour and appearance to those shown. If you require further information or customisation, please contact us directly.



WISKA-Order no.	10101147
Type	SKS 575
Material	Stainless steel 1.4301 (V2A)
Colour	RAL 9016
Surface	Powder coated
Wattage	575 W
Voltage	230 V
Type of Voltage	AC
Protection class	IP68 (0,2bar, 30min), IP56
Reflector	Aluminium, auxiliary mirror, splitted mirror
Lightsource	Metal halide lamp
Lightsource incl.	Yes
Bulb shape	rod shaped
Colour temperature	6000 K
Luminous flux	49000 lm
Average lamp durability	1000 h
Light performance	Maximum light after 45 sec.
Light intensity mio/cd	4
Lampholder	SFc10-4
Number of lampholder	2 ST
Temp. range min	-25 °C
Temp. range max	45 °C
Power supply, standard	PSUH: HMI, 575W, 230VAC
Power cable	H07RN-F 3x1,5mm ²
Material globe/diffuser	Glass

Your Contact:

WISKA India Pvt. Ltd.

Mr. Omkar Ashar · Unit No.247/248,Raheja Tesla Industrial District II , Edison Bldg No.-1A,
 Plot No.GEN2/1/C/PART, TTC Industrial Area, MIDC, Juinagar, Navi Mumbai 400705, India

☎ +91-22-4967-1438 · ☎ +91-22-4967-1439 · o.ashar@wiska.in · www.wiska.in

Globe colour	Clear
External dimensions LxWxH	400x705x637mm
Approval	DNV-GL, RMRS
Mounting	Upside
Weight	48 kg
Tariff number	94054910

Remarks:

Protection class IP68 2,5bar 20min. only for searchlight head

Protection class IP 56 for ballast unit

Equipment:

- Toughened front glass
- Rubber sealing
- 2x lamp/lamp change mechanism
- Quick fastening devices
- Ignition
- Ballast
- Connection cable 5m
- Anti dazzle screen
- with swivel base
- This device is built at least according to requirements of ABS, BV, DNV-GL, LR, PRS

Spare parts

SP-SW/SH/SKS-400 front frame+front glass	22000038
SP-S-Quick releases clamp (4 pcs)	22000050
SP-SKS-Reflector unit D400 two-part	22000105
SP-SKS-Auxiliary mirror LSH 400/450	22000106
SP-SH/SKS-Metal halide discharge lamp	22000107
SP-SH/SKS-Igniter type IG 575 KVG	22000108
SP-SH/SKS-Lamp holder SFc10-4 for 575W	22000109
SP-SH/SKS-Series impedance for 575W	22000110
SP-SKS Cover	22000473
SP-SKS Swivel base	22000474

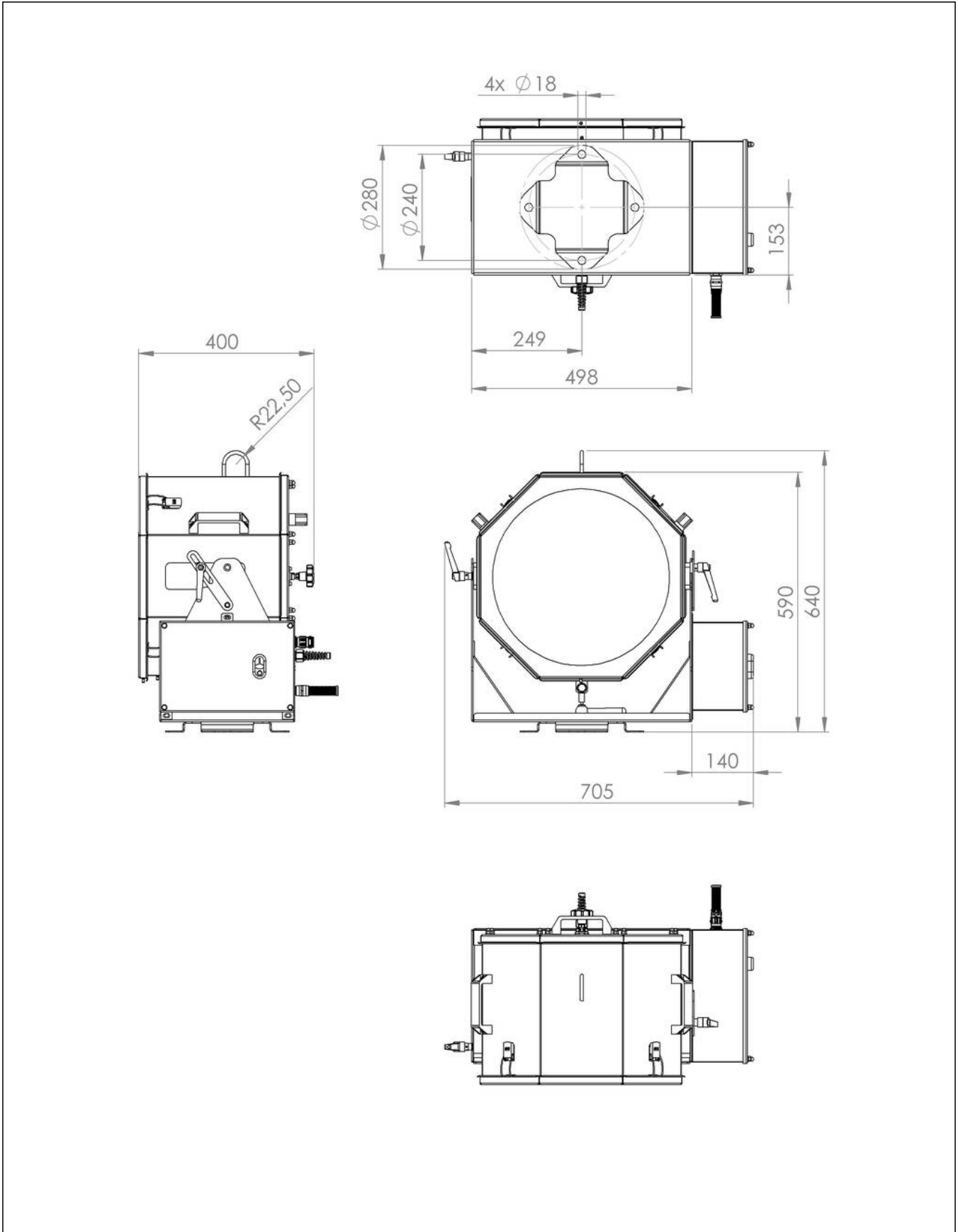
12.05.2026

Your Contact:

WISKA India Pvt. Ltd.

Mr. Omkar Ashar · Unit No.247/248,Raheja Tesla Industrial District II , Edison Bldg No.-1A,
 Plot No.GEN2/1/C/PART, TTC Industrial Area, MIDC, Juinagar, Navi Mumbai 400705, India

☎ +91-22-4967-1438 · ☎ +91-22-4967-1439 · o.ashar@wiska.in · www.wiska.in



Your Contact:

WISKA India Pvt. Ltd.

Mr. Omkar Ashar · Unit No.247/248,Raheja Tesla Industrial District II , Edison Bldg No.-1A,
Plot No.GEN2/1/C/PART, TTC Industrial Area, MIDC, Juinagar, Navi Mumbai 400705, India

☎ +91-22-4967-1438 · ☎ +91-22-4967-1439 · o.ashar@wiska.in · www.wiska.in