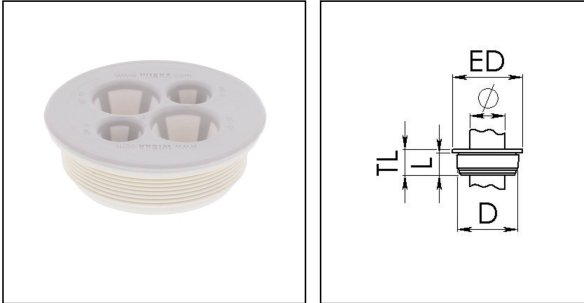


## EMTZ 32/02/120-02/080 V0 LG

MultiCLIXX® Membrane cable entrie with strain relief, plastic, RAL 7035, M32



Products may differ in size, colour and appearance to those shown. If you require further information or customisation, please contact us directly.



<b>Material</b>	Polypropylene
<b>Material membrane</b>	TPE
<b>Temp. range min</b>	-30 °C
<b>Temp. range max</b>	80 °C
<b>Glow wire test</b>	960 °C
<b>Protection class</b>	IP66
<b>Ø Connection thread D</b>	32
<b>Length screw-in thread L</b>	9,5 mm
<b>Ø cable diameter min</b>	4 mm
<b>Ø cable diameter max</b>	12 mm
<b>External diameter ED</b>	37 mm
<b>Total length TL</b>	12 mm
<b>Ø Drilling</b>	32 mm
<b>Wall thickness S</b>	2 mm
<b>Product Color</b>	RAL 7035
<b>Order no. RAL 7035</b>	10108616
<b>Type</b>	EMTZ 32/02/120-02/080 V0 LG
<b>Packing unit</b>	50
<b>ETIM-Classification</b>	EC000451

Remarks:

- Flammability: UL94-V0
- for cable entries 2 x 7-12mm + 2 x 4-8mm

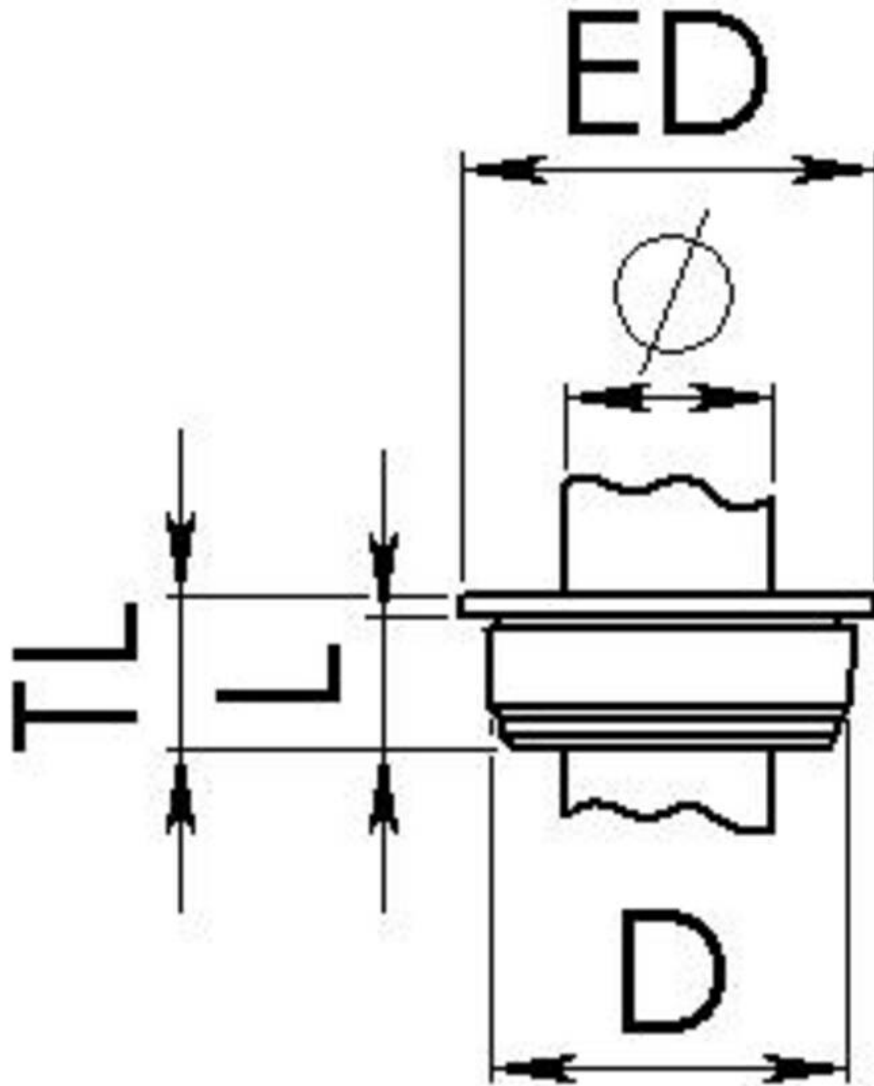
12.05.2026

Your Contact:

**WISKA India Pvt. Ltd.**

Mr. Omkar Ashar · Unit No.247/248,Raheja Tesla Industrial District II , Edison Bldg No.-1A,  
Plot No.GEN2/1/C/PART, TTC Industrial Area, MIDC, Juinagar, Navi Mumbai 400705, India

☎ +91-22-4967-1438 · ☎ +91-22-4967-1439 · o.ashar@wiska.in · www.wiska.in



Your Contact:

**WISKA India Pvt. Ltd.**

Mr. Omkar Ashar · Unit No.247/248,Raheja Tesla Industrial District II , Edison Bldg No.-1A,  
Plot No.GEN2/1/C/PART, TTC Industrial Area, MIDC, Juinagar, Navi Mumbai 400705, India

☎ +91-22-4967-1438 · ☎ +91-22-4967-1439 · o.ashar@wiska.in · www.wiska.in