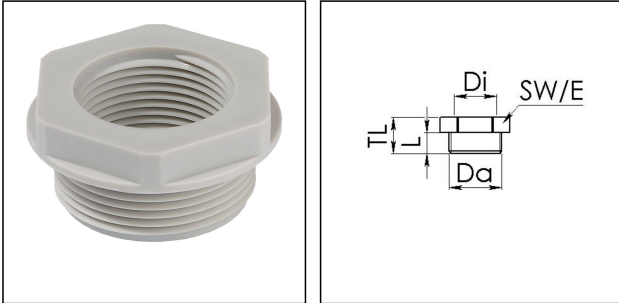


APM 21/20 LG

Adaptor polyamide, RAL 7035, Pg21 / M20



Products may differ in size, colour and appearance to those shown. If you require further information or customisation, please contact us directly.



Material	Polyamide, fibre reinforced
Temp. range min	-40 °C
Temp. range max	100 °C
Glow wire test	650 °C
Thread type outer	PG
Ø outer thread	21
Length screw-in thread L	12 mm
Thread type inner	M
Ø inner thread	20
Lead inner	1,5
Length internal thread	15,5 mm
Total length TL	30 mm
Key width SW	33 mm
Collar diameter (E)	36 mm
Form	B
Product Color	RAL 7035
Order no. RAL 7035	10110810
Type	APM 21/20 LG
Packing unit	25
EAN number	4007686258813
Tariff number	39269097
ETIM-Classification	EC000938

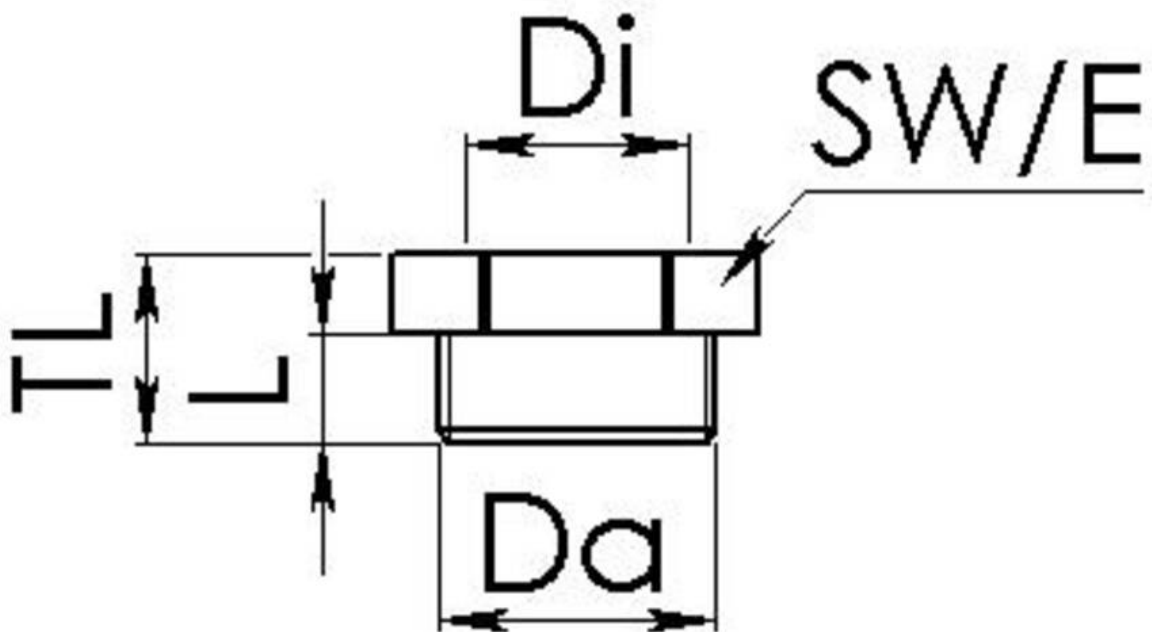
23.05.2026

Your Contact:

WISKA India Pvt. Ltd.

Mr. Omkar Ashar · Unit No.247/248,Raheja Tesla Industrial District II , Edison Bldg No.-1A,
Plot No.GEN2/1/C/PART, TTC Industrial Area, MIDC, Juinagar, Navi Mumbai 400705, India

☎ +91-22-4967-1438 · ☎ +91-22-4967-1439 · o.ashar@wiska.in · www.wiska.in



Your Contact:

WISKA India Pvt. Ltd.

Mr. Omkar Ashar · Unit No.247/248, Raheja Tesla Industrial District II, Edison Bldg No.-1A,
Plot No.GEN2/1/C/PART, TTC Industrial Area, MIDC, Juinagar, Navi Mumbai 400705, India

☎ +91-22-4967-1438 · ☎ +91-22-4967-1439 · o.ashar@wiska.in · www.wiska.in

Other technical data on request / subject to change without notice